

# PROJECT UPDATE

## Southeast Area Improvements – St James Water Infrastructure Project

Progressive Design Build

Brent Lockamy, PE  
Larry W. Mitchell, PE

02/13/2025



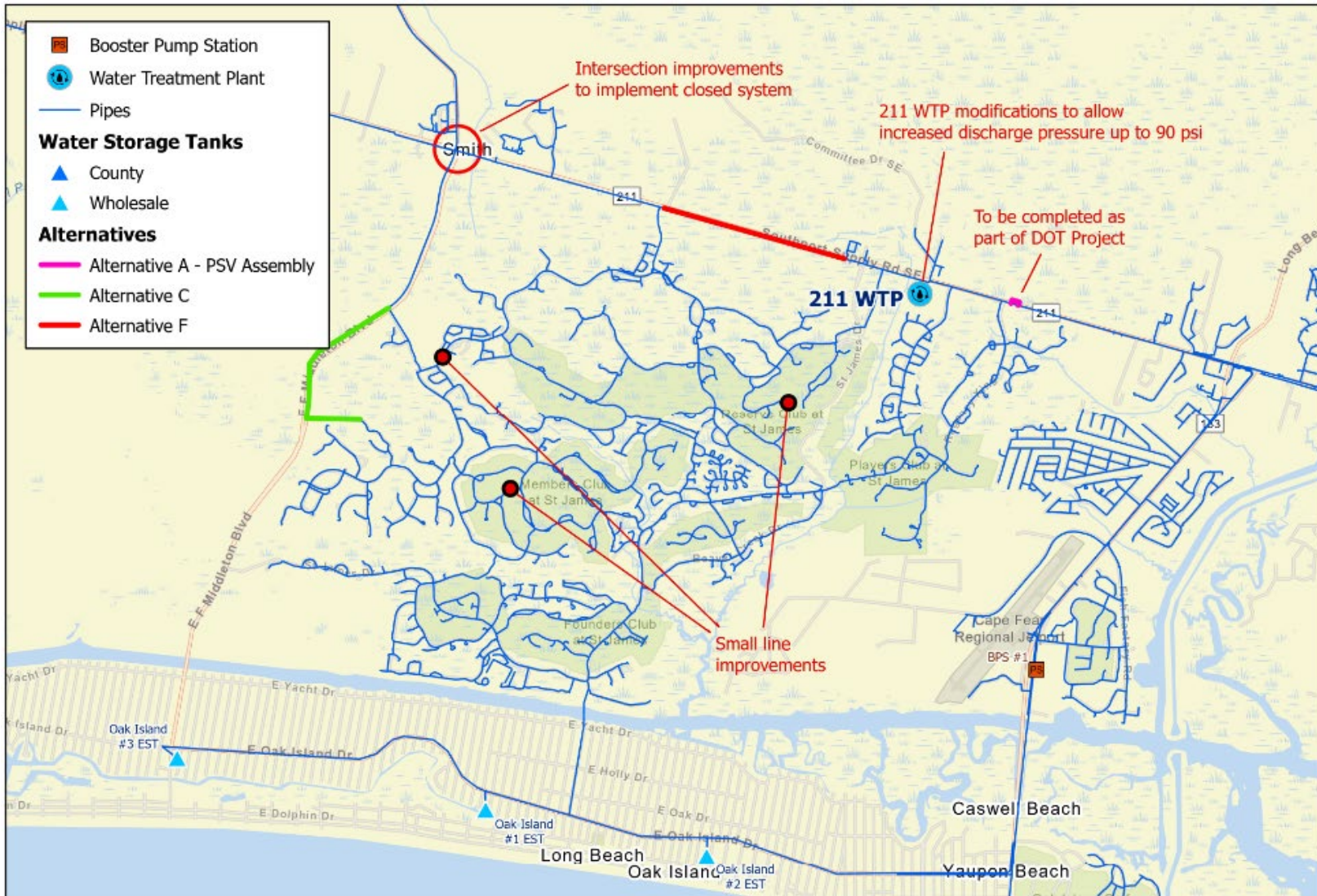
# Agenda

- Project Team
- Scope of Work
- Schedule
- Review Highlights from 10% Design MEMO
- Budget Update- not GMP
- Questions


# Project Team

- Bob Tweedy, PE – Brunswick County Project Manager
- Dustin Wagner, PE – State Utility Inc - Design Build Contractor
- Larry Mitchell, PE – CDM Smith – Design Build Designer
  - Davey Resources- Environmental Subconsultant
  - ECS Southeast – Geotechnical Engineering Subconsultant
  - Cape Fear Engineering – Project Surveying

# PER Recommendations



# Scope of Work

- Conduct Field Work (Wetlands, Survey, Geotechnical)
- Concept Memorandum
  - Assess routes considering NCDOT, easements and wetlands
  - Discuss interior connections with St. James
  - Update Construction Budgets
- Review with County, adjust as necessary –  YOU ARE HERE
- Complete 60% level design drawings
- Review 60% level design and Easements with County
- Guarantee Maximum Price (GMP), Enter Phase 2 agreement
- Complete 90% level design drawings
- Submit permits for regulatory review
- Construct water system improvements

# Schedule

- Notice to Proceed – August 5, 2024
- Env Field Work Completion– Mid October 2024
- Conceptual Design Memo – Mid December 2024
- Review of Construction Cost – Feb. 2025
- 60% level design review – April 2025- **still on target**
- Review Construction Cost - May 2025
- Phase 2 Agreement – July 2025, Construction begins
- Permits Complete – November 2025
- Construction Complete – NLT June 2026
- All paperwork and payments complete – NLT November 2026

# Check Valve and Hwy 211- 12" Water Main

Extensive coordination with NCDOT, allowed inside Right of Way. **PROJECT WIN!**

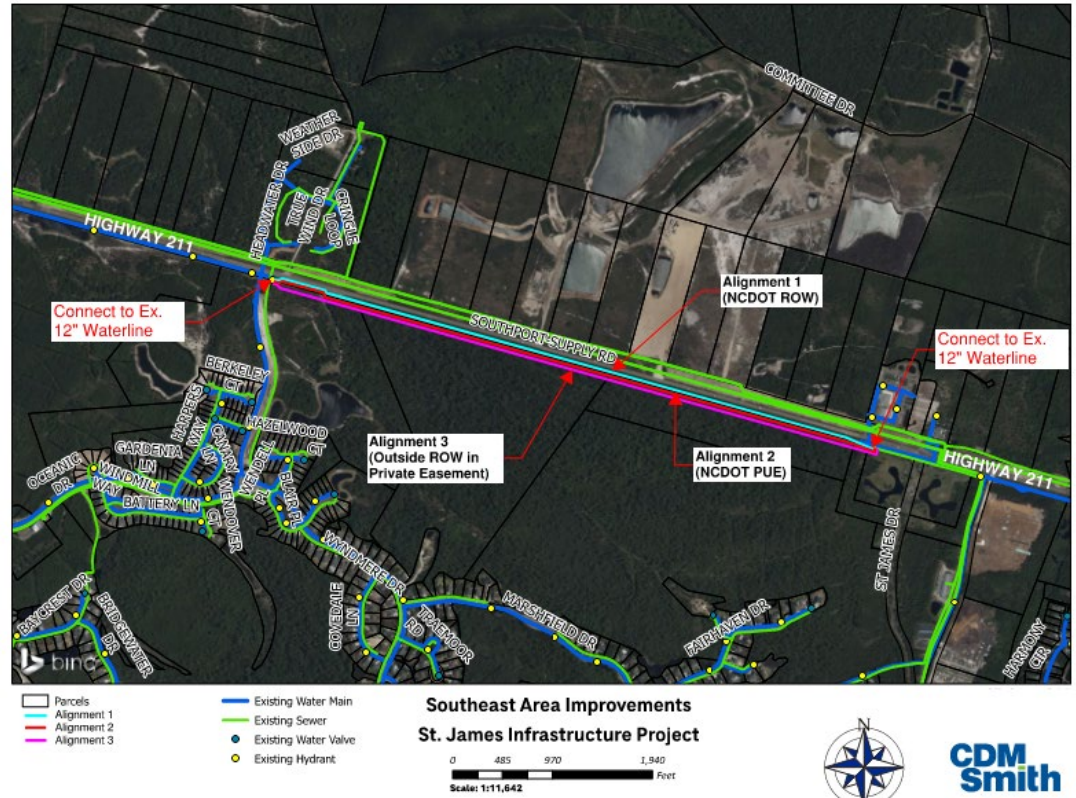
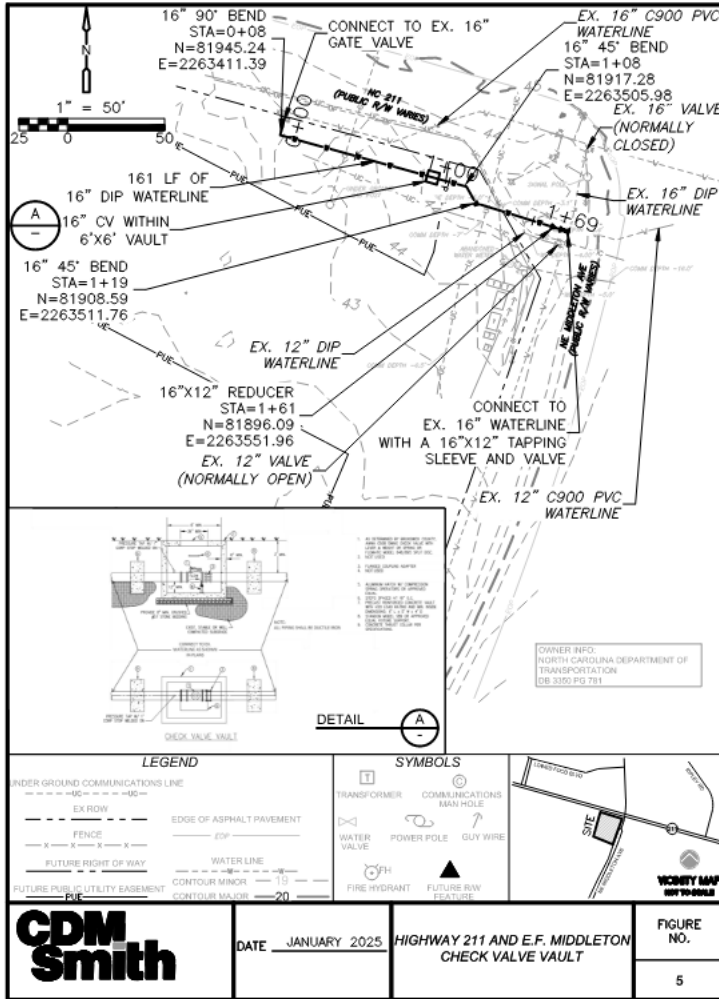


Figure 1 - Highway 211 - Alternate Alignments

# Hwy 906 – 16" Water Main

Extensive coordination with NCDOT, and private property owners, significant consideration to future connections, underway.

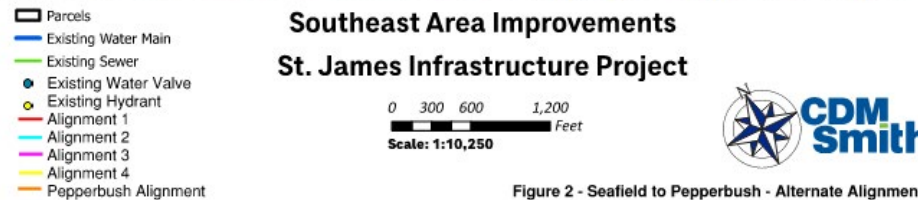
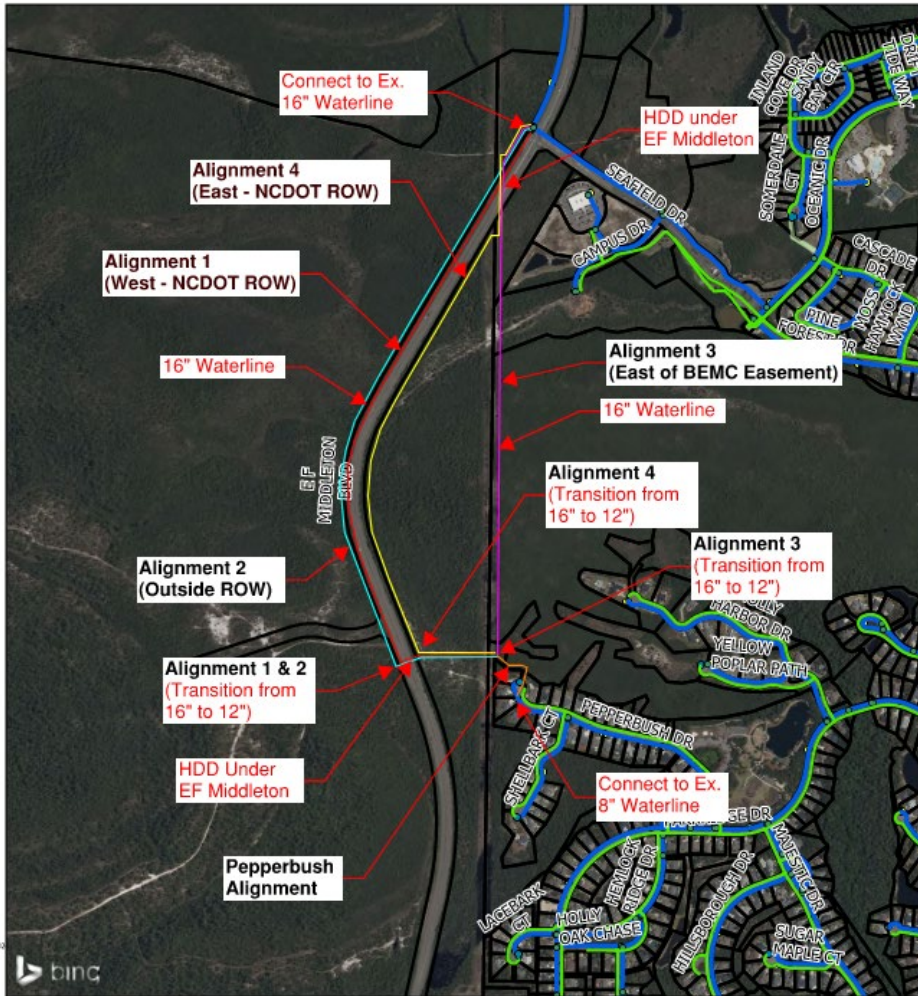


Figure 2 - Seafield to Pepperbush - Alternate Alignments

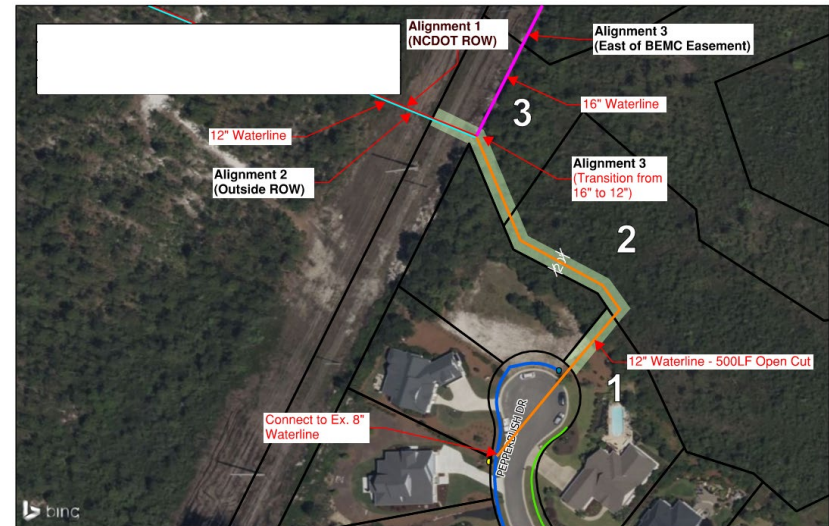
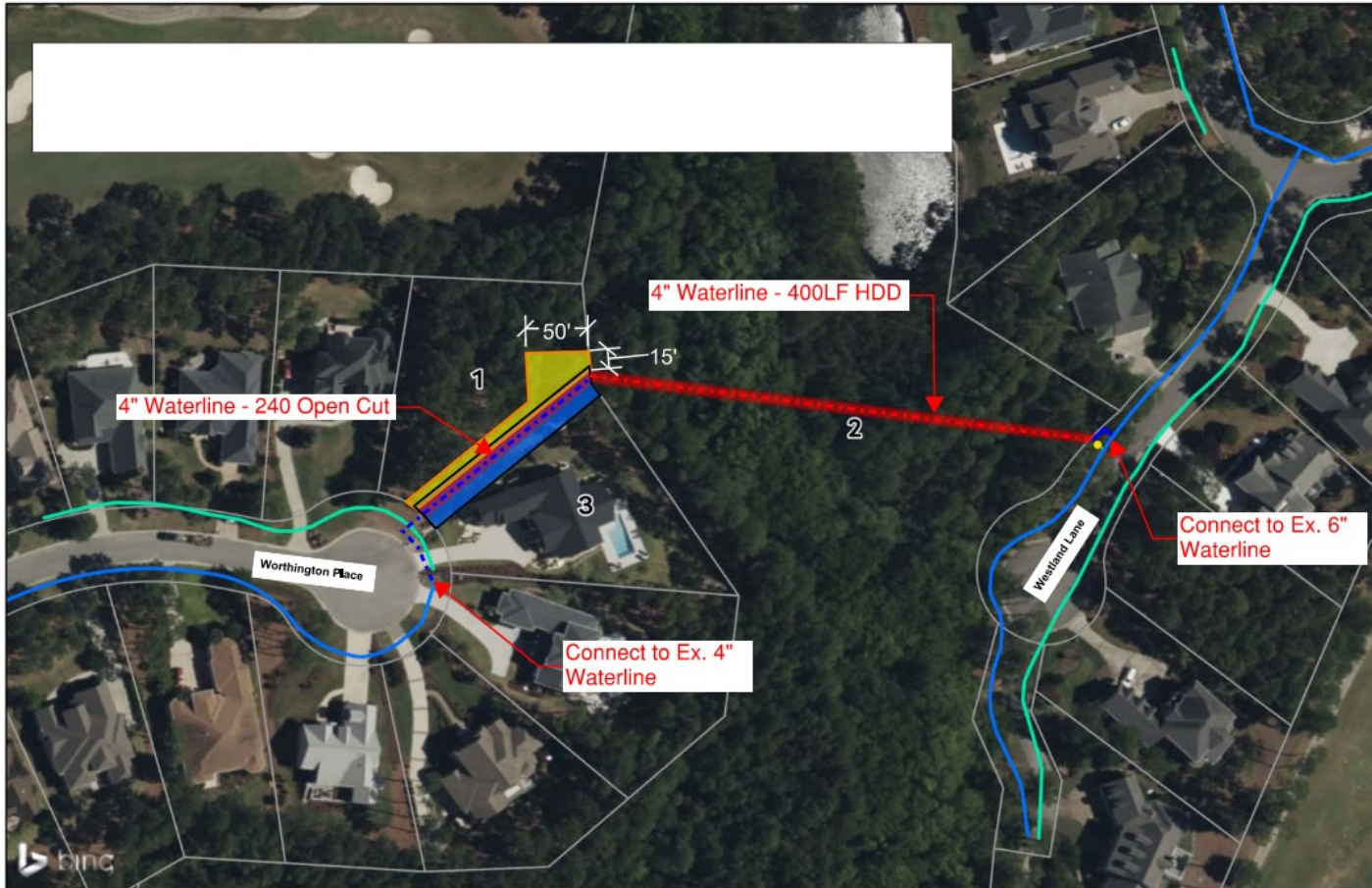






Figure 4 - Pepperbush Interconnection



# Worthington to Westland – 4” Water Main



Horizontal Directional Drill and Open Cut across Private property, via 3 Easements

- |  |  |
|--|--|
|  25' Existing Water Course Easement  |  Existing Sewer               |
|  10' Permanent Easement              |  Existing Water Main          |
|  10' Temporary Construction Easement |  Existing Fire Hydrant        |
|  Parcels                             |  Open Cut                     |
|  |  Horizontal Directional Drill |

## Southeast Area Improvements St. James Infrastructure Project

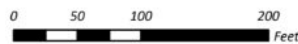


Figure 6 - Worthington Place to Westland Lane Interconnection

# Members Club to Medina – 4” Water Main



Horizontal Directional Drill behind 7th Green of Members Club, connect at Medina Court, via two easements

- Proposed Permanent Easement
- Proposed Temporary Construction Easement
- Existing Access and Utility Easement
- Parcels
- Proposed Water Main by Horizontal Directional Drill
- Proposed Water Main by Open Cut
- Existing Water Main
- Existing Sewer
- Existing Water Valve

## Southeast Area Improvements St. James Infrastructure Project



**CDM  
Smith**

Figure 7 - Medina to Members Interconnection

# Oceanic to Somerdale – 4” Water Main



Open Cut  
Installation  
from Oceanic  
Dr to  
Somerdale  
Court. via  
3 Easements

- █ Proposed Permanent Easement
- Parcels
- █ Proposed Water Main by Open Cut
- █ Existing Water Main
- █ Existing Sewer
- Existing Water Valve

**Southeast Area Improvements  
St. James Infrastructure Project**



Figure 8 - Oceanic and Somerdale Interconnection



# Questions





# BONEYARD